

Access to Shiga Prefecture



●Car
Kansai International Airport→(Hanshin Expressway)→Osaka city tour→(Meishin Expressway)→Kyoto city tour→Shiga Prefecture [Otsu]→(Meishin Expressway/ Kinki Expressway/ Hanwa Expressway)→Kansai International Airport

●Train
Kansai International Airport→(JR Express Haruka)→Kyoto city tour→(JR Biwako Line)→Shiga Prefecture [Otsu]→(JR Biwako Line/JR Express Haruka)→Kansai International Airport



●Car
Kansai International Airport→(Hanshin Expressway)→Osaka city tour→(Meishin Expressway)→Kyoto city tour→Shiga Prefecture [Otsu/ Hikone/ Nagahama]→(Meishin Expressway)→Chubu International Airport

●Train
Kansai International Airport→(JR Express Haruka)→Kyoto city tour→(JR Biwako Line)→Shiga Prefecture [Otsu/ Hikone/ Nagahama]→(Shinkansen bullet train)→Nagoya→Chubu International Airport



●Car
Kansai International Airport→(Hanshin Expressway)→Osaka city tour→(Meishin Expressway)→Kyoto city tour→Shiga Prefecture [Otsu/ Hikone/ Nagahama] city tours→Maibara (Shinkansen bullet train)→Tokyo city tour→Narita International Airport

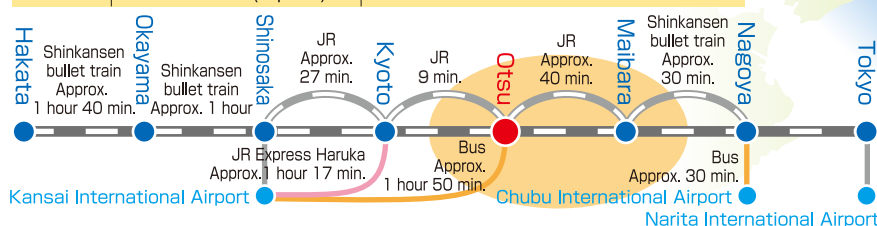
●Train
Kansai International Airport→(JR Express Haruka)→Osaka city tour→(JR Biwako Line)→Shiga Prefecture [Otsu/ Hikone/ Nagahama]→Maibara (Shinkansen bullet train)→Tokyo city tour→Narita International Airport



Shiga Prefecture is situated in a very convenient location with excellent access to Kyoto, Osaka, Kobe and Nagoya. You can easily access Tokyo via the Shinkansen.



Travel time from major Japanese cities to Shiga Prefecture			
Name of City	On the train	Via highway	
Kyoto	9 min.	3.3km	2 min.
Osaka	39 min.	40.3km	35 min.
Nagoya	47 min. (Shinkansen)	136.9km(Shinmeishin Expressway)	1 hour 43 min.
Tokyo	2 hours 30 min. (Shinkansen)	474.3km	5 hours 26 min.
Kanazawa	2 hours 13 min. (Express)	214.7km	2 hours 42 min.



Tourist information center

Biwako Visitors Bureau

Shiga Prefecture Tourism Promotion Division

Shiga Prefecture Tourist & Product Information Center (Tokyo)

<http://en.biwako-visitors.jp/>

TEL.+81-77-511-1535 FAX.+81-77-526-4393

TEL.+81-77-528-3741 FAX.+81-77-528-4870

TEL.+81-3-5220-0231 FAX.+81-3-3211-4689

2016.11

The four seasons of Japan Japan's largest lake Journey to Shiga



SHIGA Tourism Official Website

SHIGA · BIWAKO
en.biwako-visitors.jp

Shiga Prefecture



Shiga offers plenty of historic spots to visit. Shiga boasts Hikone Castle (a national treasure) and ancient temples such as Hieizan Enryakuji.

Shiga provides plenty of opportunities to come in contact with nature, and any time of the year you can encounter breathtaking views. You can spend your holiday at the mother lake Biwa, the biggest lake in Japan, enjoying various attractions such as historic buildings, nostalgic views, traditional crafts and cultural experiences, seasonal lakeside food and local cuisine, high-quality hot springs, waterfront activities and sports.

春 Spring

In springtime, a cool wind blows from Lake Biwa. Encounter nature on a cruise ship and a boat en route to a water district.

Come and enjoy the memorable "Eight Scenes of Lake Biwa." Visit the historic towns and the old highway. Spring is when the lake water begins to warm again. You can enjoy atmospheric excursions to a water district, and cruise Lake Biwa aboard a pleasure boat.



夏 Summer

In summer, Shiga offers a lot of fun on the waterfront, including watersports, fireworks and festivals.

Enjoy watersports such as sailing and wind surfing. At night, fireworks light up the night. Lake Biwa in summer offers a lot to do and see, including nature watching amid the waterfront flowers.



秋 Autumn

The beautiful season is coming to Lake Biwa, setting a marked contrast to a colorful autumn in the mountains.

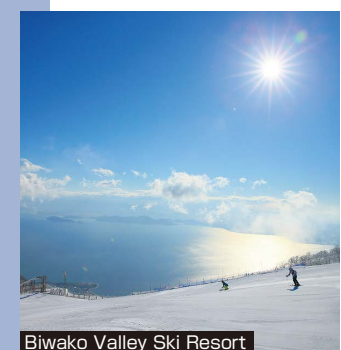
Autumn is when the mountains surrounding Lake Biwa turn shades of red and yellow. Visit the lake country to see the colorful leaves, the stone Buddha statues on the east side of the lake, and a festival where you'll share the tradition, culture and history.



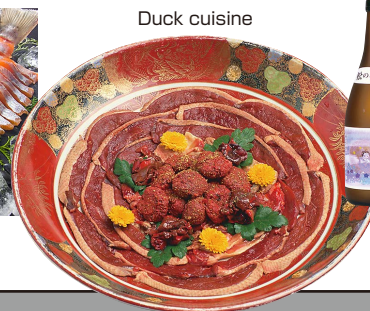
冬 Winter

During the quiet and atmospheric winter in Shiga, you can watch charming waterfowl and view bonsai plum trees.

Warm your body, and your soul, with hot duck pot and hot spring baths. This is a place of snowy ski resorts and the Bonbai exhibition of well-cared-for bonsai plum trees with pink blossoms. The lake country quietly awaits the spring.



味 Savor the food of the lake country
with plenty of local ingredients.



Surrounded by nature, Shiga offers an abundance of fresh foods such as fish from Lake Biwa, Omi beef, ducks and buckwheat noodles. Enjoy the variety of food and cooking styles of the lake country.

Lake Biwa gives visitors opportunities to enjoy the beautiful views of four district seasons.

Shiga Prefecture, at the heart and crossroads of Japan, has flourished since ancient days. Today Shiga remains a convenient base for travelling in Japan, offering easy access to Kyoto and Osaka, as well as Kyushu and Tokyo. Lake Biwa, the biggest lake in Japan, Nature, tradition, culture, history, art, food: everything good about Japan is right here in Shiga Prefecture. Shiga Prefecture is the quintessential Japan.

